

FIRST FLOOR PLAN - WEST WING

DRAWN BY: JRR, EAL
PROJECT ISSUE DATE: 2-5-09

No.	Date
4	2-20-09 per State Fire Marshal
5	2-20-09 Clearances

ARCHITECT PROJECT NO.	ARCHITECT CAD NO.
20746	20746 A-1.1

- APPROVED DRAWING USE:**
- DESIGN DEVELOPMENT
 - PROGRESS 100%
 - PERMIT ACQUISITION
 - FOR BIDDING
 - CONSTRUCTION DOCUMENT

SHEET ISSUE DATE: 2-26-09

COPYRIGHT © ALL RIGHTS RESERVED. REPRODUCTION IN WHOLE OR IN PART IS PROHIBITED. THIS DRAWING IS AN INSTRUMENT OF SERVICE. IT IS THE PROPERTY OF THE ARCHITECT AND MAY NOT BE USED IN ANY WAY WITHOUT WRITTEN PERMISSION OF THIS FIRM.

SHEET NO.

A-1.1

MARK WALL DESCRIPTION

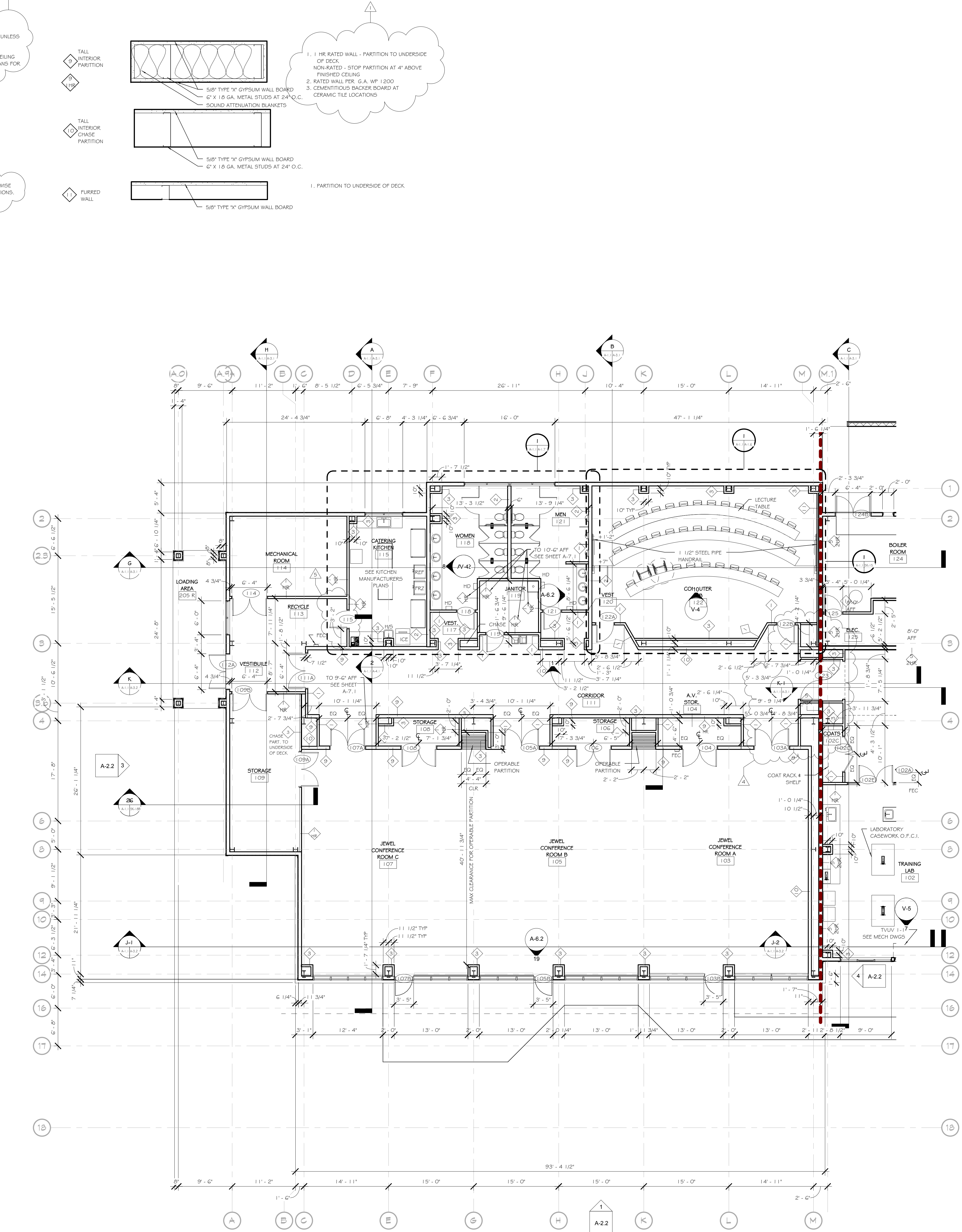
- ◇ TYPICAL INTERIOR PARTITION
- ◇ SOUND WALL
- ◇ CHASE WALL
- ◇ FURRED WALL
- ◇ 2 HOUR RATED WALL
- ◇ INTERIOR CONCRETE MASONRY WALL
- ◇ PARTIAL HEIGHT PARTITION 6'-0" AFF
- ◇ INTERIOR CONCRETE MASONRY WALL

REMARKS

- 1. 1 HR RATED WALL - PARTITION TO UNDERSIDE OF DECK UNLESS NOTED OTHERWISE. SEE REFLECTED CEILING PLANS.
- NON-RATED - STOP PARTITION AT 4" ABOVE FINISHED CEILING UNLESS NOTED OTHERWISE. SEE REFLECTED CEILING PLANS FOR DECK-TO-DECK PARTITIONS.
- 2. RATED WALL PER. G.A. WP 1200
- 3. CEMENTITIOUS BACKER BOARD AT CERAMIC TILE LOCATIONS
- 1. PARTITION TO UNDERSIDE OF DECK
- 2. CEMENTITIOUS BACKER BOARD AT CERAMIC TILE LOCATIONS
- 1. PARTITION TO 4" ABOVE CEILING - UNLESS NOTED OTHERWISE SEE REFLECTED CEILING PLANS FOR DECK-TO-DECK PARTITIONS.
- 1. PARTITION TO 4" ABOVE CEILING
- 1. PARTITION TO UNDERSIDE OF DECK
- 2. RATED WALL PER. G.A. WP 1711 (6" STUD)
- 1. PARTITION TO 6'-0" AFF
- 1. PARTITION TO 6'-0" AFF
- 1. SEE PLAN FOR PARTITION HEIGHTS

ALL INTERIOR PARTITION DIMENSIONS ARE FROM FACES OF STUDS AND COLUMN GRID LINES, UNLESS OTHERWISE NOTED.

DOOR DIMENSIONED TO OUTSIDE OF JAMBES UNLESS OTHERWISE NOTED.



1 FIRST FLOOR PLAN - WEST WING
SCALE: 1/8" = 1'-0"

DRAWN BY: JRR, EAL
PROJECT ISSUE DATE: 2-5-09

No.	Date
4	2-20-09 per State Fire Marshal
5	2-26-09 Clearances
7	3-20-09 MEP Redesign & Sizing
8	4-21-09 Various Adj.

ARCHITECT	CAD NO.
20746	20746 A-1.2

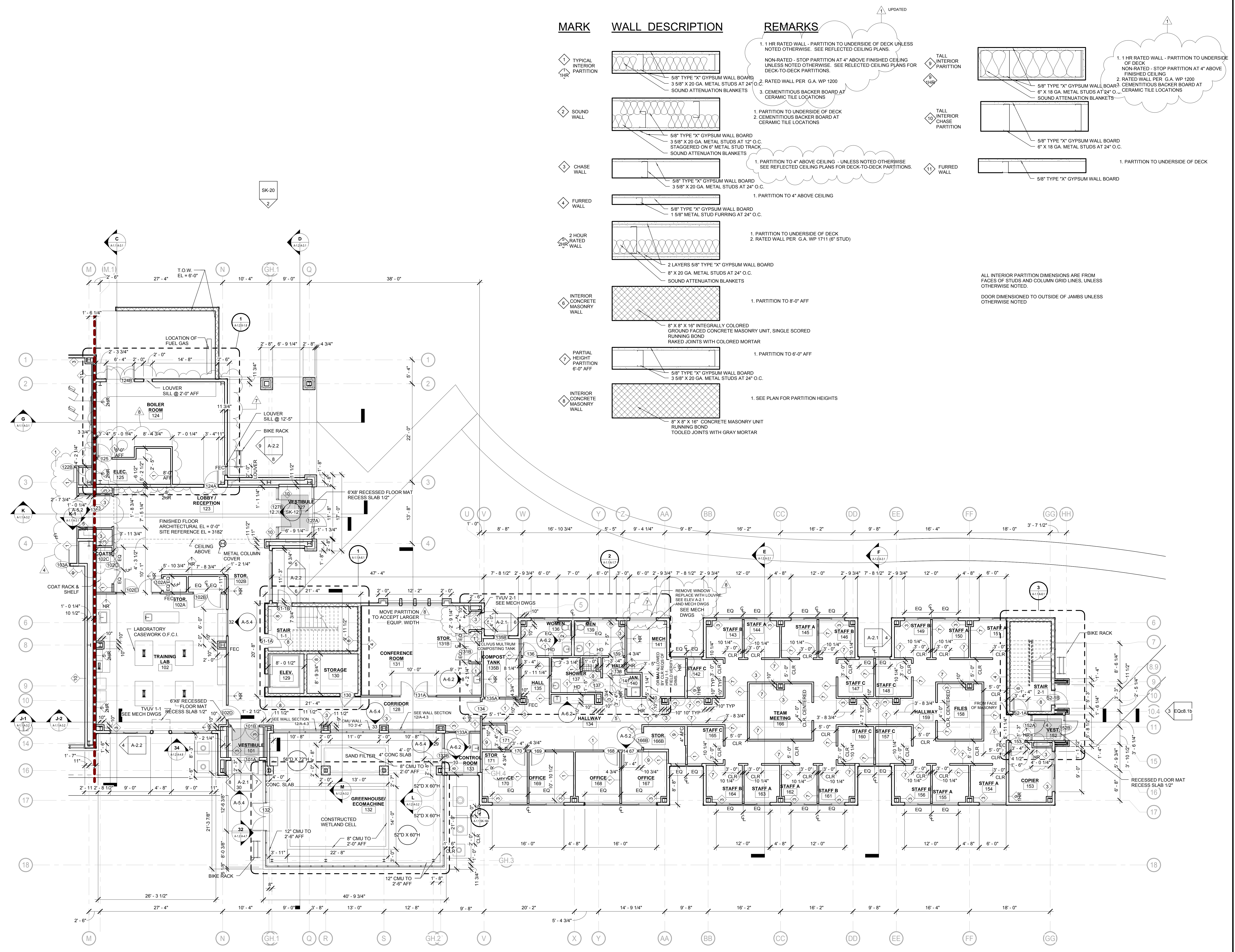
APPROVED DRAWING USE:

- DESIGN DEVELOPMENT
- PROGRESS 100%
- PERMIT ACQUISITION
- FOR BIDDING
- CONSTRUCTION DOCUMENT

SHEET ISSUE DATE: 4-21-09

COPYRIGHT © ALL RIGHTS RESERVED. REPRODUCTION IN WHOLE OR IN PART IS PROHIBITED. THIS DRAWING IS AN INSTRUMENT OF SERVICE. IS THE PROPERTY OF THE ARCHITECT AND MAY NOT BE USED IN ANY WAY WITHOUT WRITTEN PERMISSION OF THIS FIRM.

SHEET NO.



MARK	WALL DESCRIPTION	REMARKS
1	5/8" TYPE "X" GYPSUM WALL BOARD 3 5/8" X 20 GA. METAL STUDS AT 24" O.C. SOUND ATTENUATION BLANKETS	1. 1 HR RATED WALL - PARTITION TO UNDERSIDE OF DECK UNLESS NOTED OTHERWISE. SEE REFLECTED CEILING PLANS. NON-RATED - STOP PARTITION AT 4" ABOVE FINISHED CEILING UNLESS NOTED OTHERWISE. SEE RELECTED CEILING PLANS FOR DECK-TO-DECK PARTITIONS.
2	5/8" TYPE "X" GYPSUM WALL BOARD 3 5/8" X 20 GA. METAL STUDS AT 24" O.C. SOUND ATTENUATION BLANKETS	1. PARTITION TO UNDERSIDE OF DECK 2. RATED WALL PER G.A. WP 1200 3. CEMENTITIOUS BACKER BOARD AT CERAMIC TILE LOCATIONS
3	5/8" TYPE "X" GYPSUM WALL BOARD 3 5/8" X 20 GA. METAL STUDS AT 24" O.C.	1. PARTITION TO 4" ABOVE CEILING - UNLESS NOTED OTHERWISE. SEE REFLECTED CEILING PLANS FOR DECK-TO-DECK PARTITIONS.
4	5/8" TYPE "X" GYPSUM WALL BOARD 1 5/8" METAL STUD FURRING AT 24" O.C.	1. PARTITION TO 4" ABOVE CEILING
5	2 LAYERS 5/8" TYPE "X" GYPSUM WALL BOARD 8" X 20 GA. METAL STUDS AT 24" O.C. SOUND ATTENUATION BLANKETS	1. PARTITION TO UNDERSIDE OF DECK 2. RATED WALL PER G.A. WP 1711 (6" STUD)
6	8" X 8" X 16" INTEGRALLY COLORED GROUND FACED CONCRETE MASONRY UNIT, SINGLE SCORED RUNNING BOND RAKED JOINTS WITH COLORED MORTAR	1. PARTITION TO 6'-0" AFF
7	5/8" TYPE "X" GYPSUM WALL BOARD 3 5/8" X 20 GA. METAL STUDS AT 24" O.C.	1. PARTITION TO 6'-0" AFF
8	8" X 8" X 16" CONCRETE MASONRY UNIT TOOLED JOINTS WITH GRAY MORTAR	1. SEE PLAN FOR PARTITION HEIGHTS

ALL INTERIOR PARTITION DIMENSIONS ARE FROM FACES OF STUDS AND COLUMN GRID LINES, UNLESS OTHERWISE NOTED.
DOOR DIMENSIONED TO OUTSIDE OF JAMBS UNLESS OTHERWISE NOTED.

1 FIRST FLOOR PLAN - EAST WING
SCALE: 1/8" = 1'-0"

DRAWN BY:
JRR, EAL
PROJECT ISSUE DATE:
2-5-09

Drawing Revisions	
No.	Date
3	1-12-09
6	3-9-09 Bulkheads
7	3-20-09 MEP Redesign & Siding
8	4-21-09 Various Adj.

ARCHITECT PROJECT NO. 20746 ARCHITECT CAD NO. 20746 A-1.3

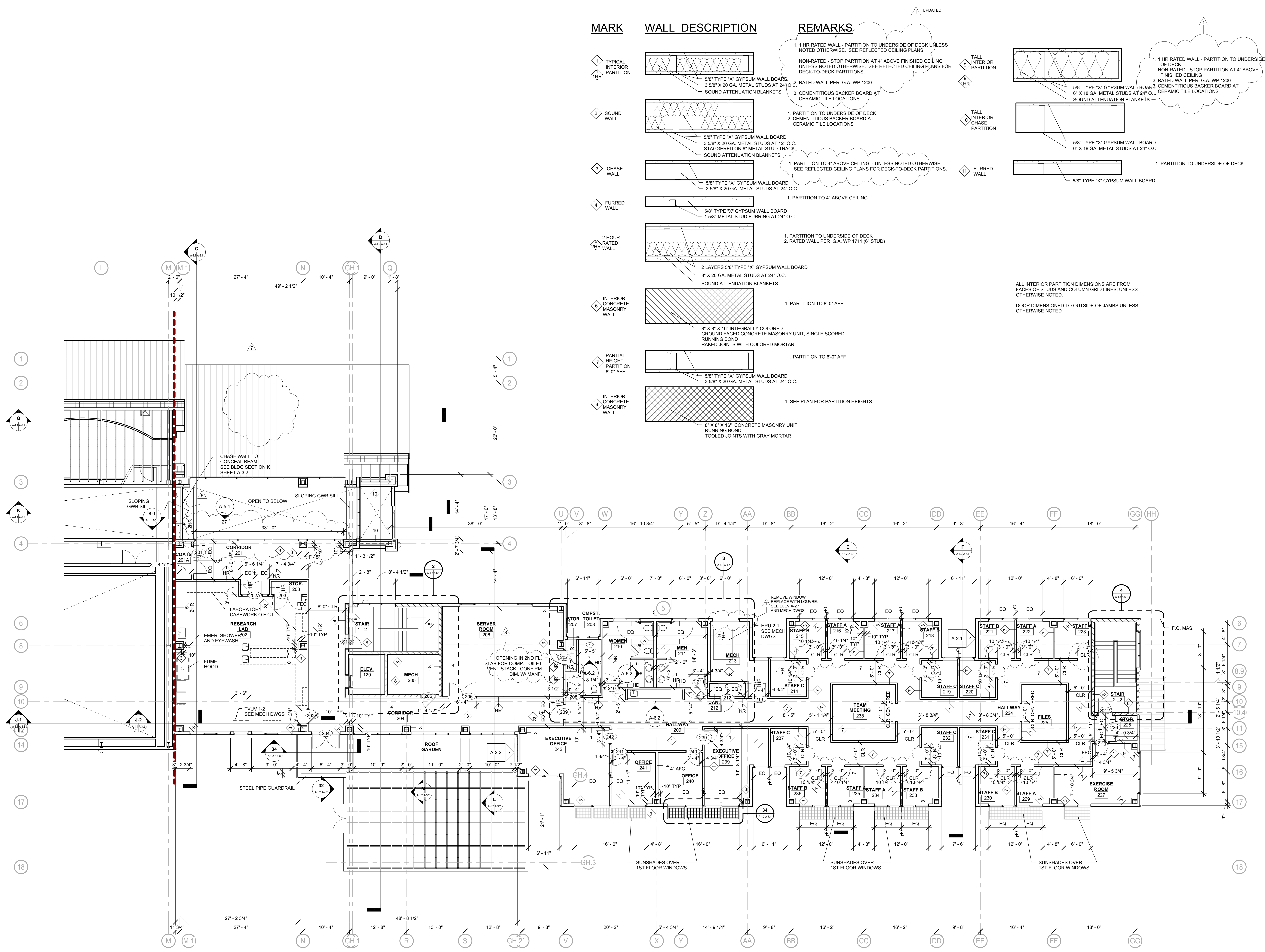
APPROVED DRAWING USE:

- DESIGN DEVELOPMENT
- PROGRESS 100%
- PERMIT ACQUISITION
- FOR BIDDING
- CONSTRUCTION DOCUMENT

SHEET ISSUE DATE:
4-21-09

COPYRIGHT © ALL RIGHTS RESERVED. REPRODUCTION IN WHOLE OR IN PART IS PROHIBITED. THIS DRAWING IS AN INSTRUMENT OF SERVICE. IS THE PROPERTY OF THE ARCHITECT AND MAY NOT BE USED IN ANY WAY WITHOUT THE WRITTEN PERMISSION OF THIS FIRM.

SHEET NO.



MARK	WALL DESCRIPTION	REMARKS
1	TYPICAL INTERIOR PARTITION	1. 1 HR RATED WALL - PARTITION TO UNDERSIDE OF DECK UNLESS NOTED OTHERWISE. SEE REFLECTED CEILING PLANS. NON-RATED - STOP PARTITION AT 4" ABOVE FINISHED CEILING UNLESS NOTED OTHERWISE. SEE REFLECTED CEILING PLANS FOR DECK-TO-DECK PARTITIONS.
2	SOUND WALL	1. PARTITION TO UNDERSIDE OF DECK 2. RATED WALL PER G.A. WP 1200 3. CEMENTITIOUS BACKER BOARD AT CERAMIC TILE LOCATIONS
3	CHASE WALL	1. PARTITION TO 4" ABOVE CEILING - UNLESS NOTED OTHERWISE SEE REFLECTED CEILING PLANS FOR DECK-TO-DECK PARTITIONS.
4	FURRED WALL	1. PARTITION TO 4" ABOVE CEILING
5	2 HOUR RATED WALL	1. PARTITION TO UNDERSIDE OF DECK 2. RATED WALL PER G.A. WP 1711 (6" STUD)
6	INTERIOR CONCRETE MASONRY WALL	1. PARTITION TO 8'-0" AFF
7	PARTIAL HEIGHT PARTITION	1. PARTITION TO 6'-0" AFF
8	INTERIOR CONCRETE MASONRY WALL	1. SEE PLAN FOR PARTITION HEIGHTS

ALL INTERIOR PARTITION DIMENSIONS ARE FROM FACES OF STUDS AND COLUMN GRID LINES, UNLESS OTHERWISE NOTED.
DOOR DIMENSIONED TO OUTSIDE OF JAMBS UNLESS OTHERWISE NOTED

1 SECOND FLOOR PLAN
SCALE: 1/8" = 1'-0"