

DRAWN BY:
JRR, EAL
PROJECT ISSUE DATE:
2-5-09

No.	Date
7	3-20-09 MEP Redesign & Siding
8	4-21-09 Various Adj.
9	5-8-09 Finishes & Trench Drains (Gutters & Blinds)

ARCHITECT PROJECT NO. 20746 ARCHITECT CAD NO. 20746 A-2.1

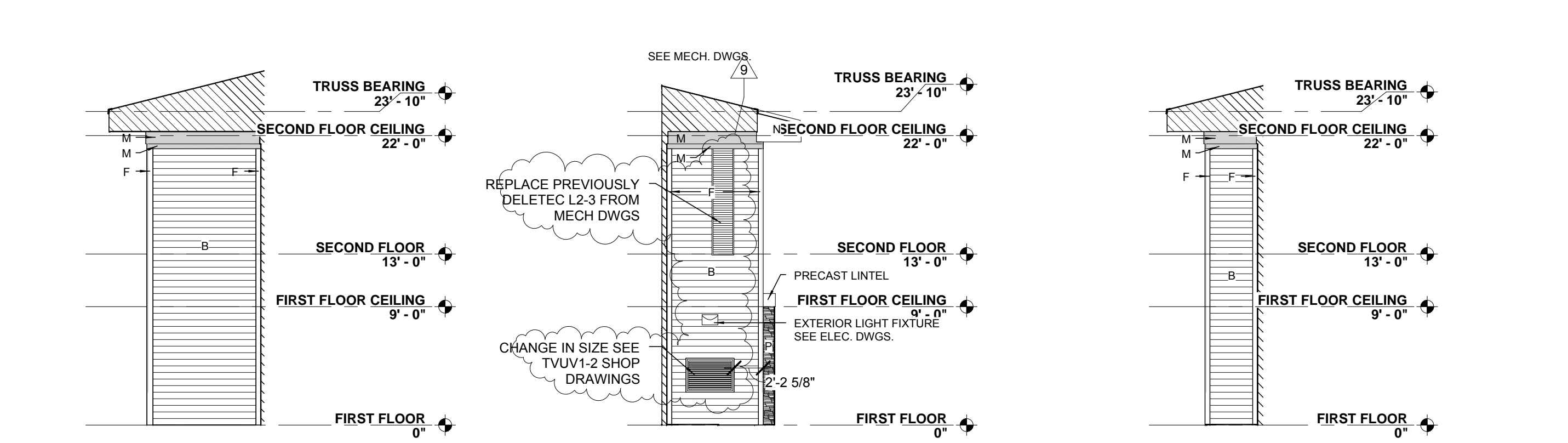
APPROVED DRAWING USE:

- DESIGN DEVELOPMENT
- PROGRESS 100%
- PERMIT ACQUISITION
- FOR BIDDING
- CONSTRUCTION DOCUMENT

SHEET ISSUE DATE:
6-8-09

COPYRIGHT © ALL RIGHTS RESERVED. REPRODUCTION OR WHILE OR IN PART IS PROHIBITED. THIS DRAWING IS AN INSTRUMENT OF SERVICE. IS THE PROPERTY OF THE ARCHITECT AND MAY NOT BE USED IN ANY WAY WITHOUT WRITTEN PERMISSION OF THIS FIRM.

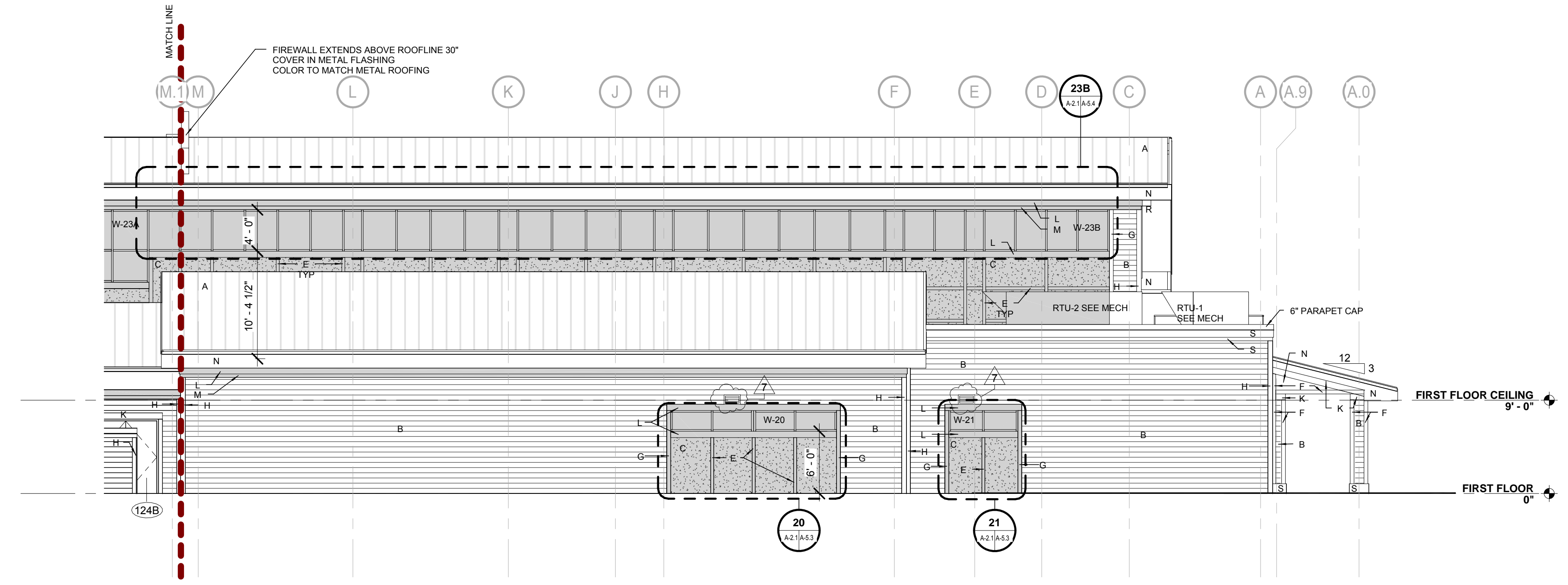
SHEET NO.



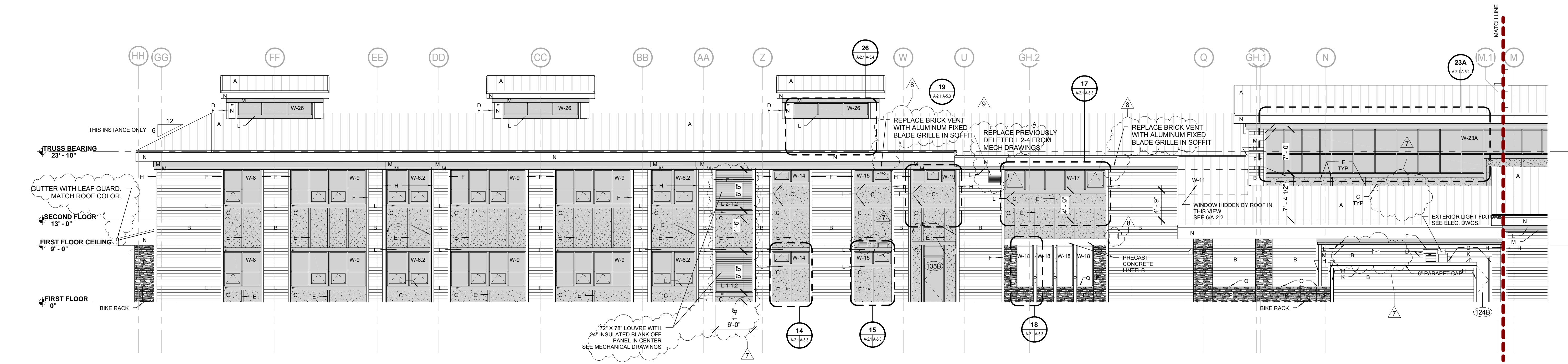
4 PARTIAL ELEV A - TYPICAL SCALE: 1/8" = 1'-0"
5 PARTIAL ELEVATION B SCALE: 1/8" = 1'-0"
6 PARTIAL ELEVATION C SCALE: 1/8" = 1'-0"



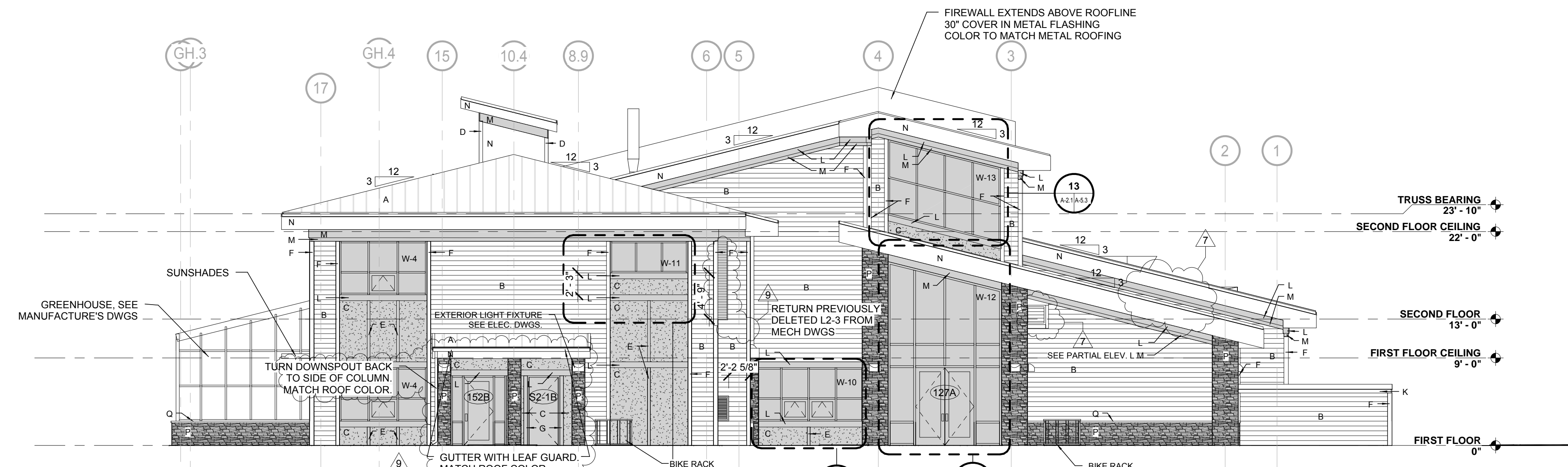
7 PARTIAL ELEVATION D SCALE: 1/8" = 1'-0"
8 PARTIAL ELEVATION E SCALE: 1/8" = 1'-0"



1 NORTH ELEVATION - WEST WING SCALE: 1/8" = 1'-0"



2 NORTH ELEVATION - EAST WING SCALE: 1/8" = 1'-0"



3 EAST ELEVATION SCALE: 1/8" = 1'-0"

NOTE THAT COLOR MODIFICATIONS ARE NOT A PERFECT ONE-TO-ONE CHANGE FROM ORIGINAL. PLEASE REFER TO ELEVATIONS, THIS PAGE, TO ENSURE ACCURACY.
COLOR SELECTION DEPENDANT ON OWNER APPROVAL

MATERIALS LEGEND - CERTAINTED

- A STANDING SEAM METAL ROOFING; IMETCO 3000 PANEL SYSTEM, ALMOND SUEDE, SEE SPECS
- B 6.25" CEMENTITIOUS SIDING WEATHERBOARD DAR LAI/COLORMAX HERITAGE CLAY
- C CEMENTITIOUS SIDING PANWEATHERBOARD TUCCO VERTIC/FACTORY CUSTOM PREFINISHED, SW 6083
- D 3.5" CEMENTITIOUS TRIMEATHERBOARD4 SMOOTH BOARDSCOLORMAX HERITAGE CLAY
- E 3.5" CEMENTITIOUS TRIMEATHERBOARD4 SMOOTH BOARDSCOLORMAX HERITAGE CLAY
- F 4.5" CEMENTITIOUS TRIMEATHERBOARD4 SMOOTH BOARDSCOLORMAX HERITAGE CLAY
- G 4.5" CEMENTITIOUS TRIMEATHERBOARD4 SMOOTH BOARDSCOLORMAX HERITAGE CLAY
- H 5.5" CEMENTITIOUS TRIMEATHERBOARD4 SMOOTH BOARDSCOLORMAX HERITAGE CLAY
- J 5.5" CEMENTITIOUS TRIMEATHERBOARD4 SMOOTH BOARDSCOLORMAX HERITAGE CLAY
- K 7.25" CEMENTITIOUS TRIMEATHERBOARD4 SMOOTH BOARDSCOLORMAX HERITAGE CLAY
- L 7.25" CEMENTITIOUS TRIMEATHERBOARD4 SMOOTH BOARDSCOLORMAX HERITAGE CLAY
- M 11.25" CEMENTITIOUS TRIMEATHERBOARD4 SMOOTH BOARDSCOLORMAX HERITAGE CLAY
- N CEMENTITIOUS SIDING PANWEATHERBOARD4 SMOOTH VERTIC/COLORMAX HERITAGE CLAY
- P NATURAL STONE VENEER, THICK CUT MOSS ROCK, BEIGE TINT MORTAR, RAKE JOINTS, SEE SPECS
- Q 2" CUT STONE SILL
- R 24" CEMENTITIOUS VENTED SOWEATHERBOARD4 SMOOTH VENTILATED SOFFIT/COLORMAX HERITAGE CLAY
- S 11.25" CEMENTITIOUS TRIMEATHERBOARD4 SMOOTH BOARDSCOLORMAX HERITAGE CLAY